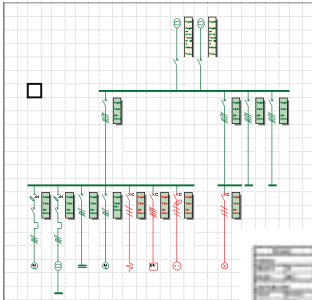


NEW

ProceraPlus v5.0

Design, drawing, calculation of an electrical LV installation, according to BS 7671



Recommended characteristics of the system

Pentium III, 128Mb Ram
Screen: min. 1024x768, recommended 1280x1024
CD-rom drive, capacity hard disc: 2Gb
Space for installation: 50Mb,
Workspace: 20% of the capacity of the hard disc
Windows 2000 Professional, Windows NT Professional,
Windows XP (Professional)
It is recommended to use a part of the hard disc as a system disc.

Concept of the installation

- In horizontal and vertical direction

Sources

- Number of sources: 6 normal + emergency source (upto 6300A) in parallel + standby power unit
- Earthing systems: TN(-C-S), TT and IT with and without neutral
- Public distribution starting from Ik

Circuits

- Distribution board
- Terminal circuit
 - Motor, socket-outlet, lighting, heating, transformer LV/LV, capacitor bank (pro distribution board), miscellaneous

Protections

- Circuit breakers
 - For general purpose (ACB M-Pact and MCCB Record Plus)
 - MCB (ElfaPlus) car. B, C and D + thermal motor protection
- Residual current devices
- Fuses
 - type gG/gL, type aM + thermal motor protection
- Back-up protection and selectivity

Study of power balance

- Perfect balance between the cost of an installation and the comfort level (no unwanted tripping)

Printing

- Dossier = compilation of documents
- Documents
 - Cover page, sources, one-wire diagram (general, pro distribution board), circuit (+ specifications), cable table, adjustment parameters of the protection unit

Helpscreens

- Linked to the parameters displayed on the screen

Manual

- With full colour illustrations and explanations of the most important technical terms

GE Power Controls

www.gepowercontrols.com

Order code Procera Plus v5.0

579252

GE imagination at work

